

Please check the examination details below before entering your candidate information

Candidate surname

Other names

**Pearson Edexcel**  
**International**  
**Advanced Level**

Centre Number

--	--	--	--	--

Candidate Number

--	--	--	--	--

**Monday 14 January 2019**

Afternoon (Time: 2 hours)

Paper Reference **WGE03/01**

**Geography**

**International Advanced Level**

**Paper 3: Contested Planet**

**You must have:**

Resource Booklet (enclosed)

Total Marks

### Instructions

- Use **black** ink or ball-point pen.
- **Fill in the boxes** at the top of this page with your name, centre number and candidate number.
- Answer **ALL** questions in Section A, **ONE** question in Section B and **ONE** question in Section C.
- Answer the questions in the spaces provided  
– *there may be more space than you need.*
- Calculators may be used.

### Information

- The total mark for this paper is 90.
- The marks for **each** question are shown in brackets  
– *use this as a guide as to how much time to spend on each question.*

### Advice

- Read each question carefully before you start to answer it.
- Check your answers if you have time at the end.

Turn over ►

P55525A

©2019 Pearson Education Ltd.

1/1/1/1/1



  
**Pearson**

**SECTION A: Compulsory topics and synoptic question**

**Answer ALL questions in this section. Write your answers in the spaces provided.**

**A1: Atmosphere and Weather Systems**

- 1 Using Figure 1, explain the possible causes **and** impacts of the trends in precipitation shown.

(10)

.....

.....

.....

.....

.....

.....

.....

.....

.....

.....

.....

.....

.....

.....

.....

.....

.....

.....

.....

.....

.....

.....

.....

.....

.....

DO NOT WRITE IN THIS AREA

DO NOT WRITE IN THIS AREA

DO NOT WRITE IN THIS AREA



DO NOT WRITE IN THIS AREA

DO NOT WRITE IN THIS AREA

DO NOT WRITE IN THIS AREA

Handwriting practice area with ten horizontal dotted lines.

**(Total for Question 1 = 10 marks)**



**A2: Biodiversity Under Threat**

**2** (a) Using Figure 2, suggest reasons for the differences in importance of ecosystem services at global and local scales.

(10)

Dotted lines for writing.

DO NOT WRITE IN THIS AREA

DO NOT WRITE IN THIS AREA

DO NOT WRITE IN THIS AREA



DO NOT WRITE IN THIS AREA

DO NOT WRITE IN THIS AREA

DO NOT WRITE IN THIS AREA

Handwriting practice lines consisting of seven horizontal dotted lines.



(b) Evaluate the relative importance of local and global threats to the biodiversity of a named terrestrial biome.

(15)

Named terrestrial biome .....

Dotted lines for writing.

DO NOT WRITE IN THIS AREA

DO NOT WRITE IN THIS AREA

DO NOT WRITE IN THIS AREA



DO NOT WRITE IN THIS AREA

DO NOT WRITE IN THIS AREA

DO NOT WRITE IN THIS AREA

(Total for Question 2 = 25 marks)



DO NOT WRITE IN THIS AREA

DO NOT WRITE IN THIS AREA

DO NOT WRITE IN THIS AREA

**Synoptic question**

You should use relevant knowledge and understanding from Unit 1 and Unit 3 (topics A1 and A2) to answer this question.

3 To what extent does being 'switched off' from globalisation increase people's risk from extreme weather hazards?

(15)

.....

.....

.....

.....

.....

.....

.....

.....

.....

.....

.....

.....

.....

.....

.....

.....

.....

.....

.....

.....

.....

.....





DO NOT WRITE IN THIS AREA

DO NOT WRITE IN THIS AREA

DO NOT WRITE IN THIS AREA

Handwriting practice area with 25 horizontal dotted lines.

**(Total for Question 3 = 15 marks)**

---

**TOTAL FOR SECTION A = 50 MARKS**





DO NOT WRITE IN THIS AREA

DO NOT WRITE IN THIS AREA

DO NOT WRITE IN THIS AREA

Handwriting practice area with 20 horizontal dotted lines.



DO NOT WRITE IN THIS AREA

DO NOT WRITE IN THIS AREA

DO NOT WRITE IN THIS AREA

(Total for Question 4 = 20 marks)



If you answer Question 5 put a cross in the box  .

**B2: Water Conflicts**

5 To what extent are large engineering projects, such as dams and water transfers, successful ways of meeting the demand for water?

(20)

Area with horizontal dotted lines for writing the answer to Question 5.

DO NOT WRITE IN THIS AREA

DO NOT WRITE IN THIS AREA

DO NOT WRITE IN THIS AREA



P 5 5 5 2 5 A 0 1 3 2 4

DO NOT WRITE IN THIS AREA

DO NOT WRITE IN THIS AREA

DO NOT WRITE IN THIS AREA

Handwriting practice area with 20 horizontal dotted lines.



DO NOT WRITE IN THIS AREA

DO NOT WRITE IN THIS AREA

DO NOT WRITE IN THIS AREA

(Total for Question 5 = 20 marks)

**TOTAL FOR SECTION B = 20 MARKS**



P 5 5 5 2 5 A 0 1 5 2 4

**SECTION C: Economic and Political options**

**Answer ONE question in this section – EITHER Question 6 OR Question 7.**

**If you answer Question 6 put a cross in the box  .**

**Write your answers in the spaces provided.**

**C1: Superpower Geographies**

**6 (a)** Using Figure 3, suggest why TNCs are important to the status of superpowers.

**(5)**

.....

.....

.....

.....

.....

.....

.....

.....

.....

.....

DO NOT WRITE IN THIS AREA

DO NOT WRITE IN THIS AREA

DO NOT WRITE IN THIS AREA





(b) Using named examples, assess the global impacts of increasing middle-class resource consumption in emerging superpowers.

(15)

DO NOT WRITE IN THIS AREA

DO NOT WRITE IN THIS AREA

DO NOT WRITE IN THIS AREA

Area with horizontal dotted lines for writing.



P 5 5 5 2 5 A 0 1 7 2 4

DO NOT WRITE IN THIS AREA

DO NOT WRITE IN THIS AREA

DO NOT WRITE IN THIS AREA

(Total for Question 6 = 20 marks)



If you answer Question 7 put a cross in the box  .

**C2: Bridging the Development Gap**

7 (a) Using Figure 4, suggest reasons for the differences in monthly income between the three ethnic groups.

(5)

.....

.....

.....

.....

.....

.....

.....

.....

.....

.....

.....

DO NOT WRITE IN THIS AREA

DO NOT WRITE IN THIS AREA

DO NOT WRITE IN THIS AREA



(b) Using named examples, assess how far trade contributes to the size of the global development gap.

(15)

Area with horizontal dotted lines for writing.

DO NOT WRITE IN THIS AREA

DO NOT WRITE IN THIS AREA

DO NOT WRITE IN THIS AREA



DO NOT WRITE IN THIS AREA

DO NOT WRITE IN THIS AREA

DO NOT WRITE IN THIS AREA

**(Total for Question 7 = 20 marks)**

**TOTAL FOR SECTION C = 20 MARKS**  
**TOTAL FOR PAPER = 90 MARKS**



P 5 5 5 2 5 A 0 2 1 2 4

DO NOT WRITE IN THIS AREA

DO NOT WRITE IN THIS AREA

DO NOT WRITE IN THIS AREA

**BLANK PAGE**



DO NOT WRITE IN THIS AREA

DO NOT WRITE IN THIS AREA

DO NOT WRITE IN THIS AREA

**BLANK PAGE**



P 5 5 5 2 5 A 0 2 3 2 4

DO NOT WRITE IN THIS AREA

DO NOT WRITE IN THIS AREA

DO NOT WRITE IN THIS AREA

**BLANK PAGE**





**Pearson Edexcel International Advanced Level**

**Monday 14 January 2019**

Afternoon (Time: 2 hours)

Paper Reference **WGE03/01**

**Geography**

**International Advanced Level**

**Paper 3: Contested Planet**

**Resource Booklet**

**Do not return this Resource Booklet with the question paper.**

*Turn over* ►

**P55525A**

©2019 Pearson Education Ltd.

1/1/1/1/1

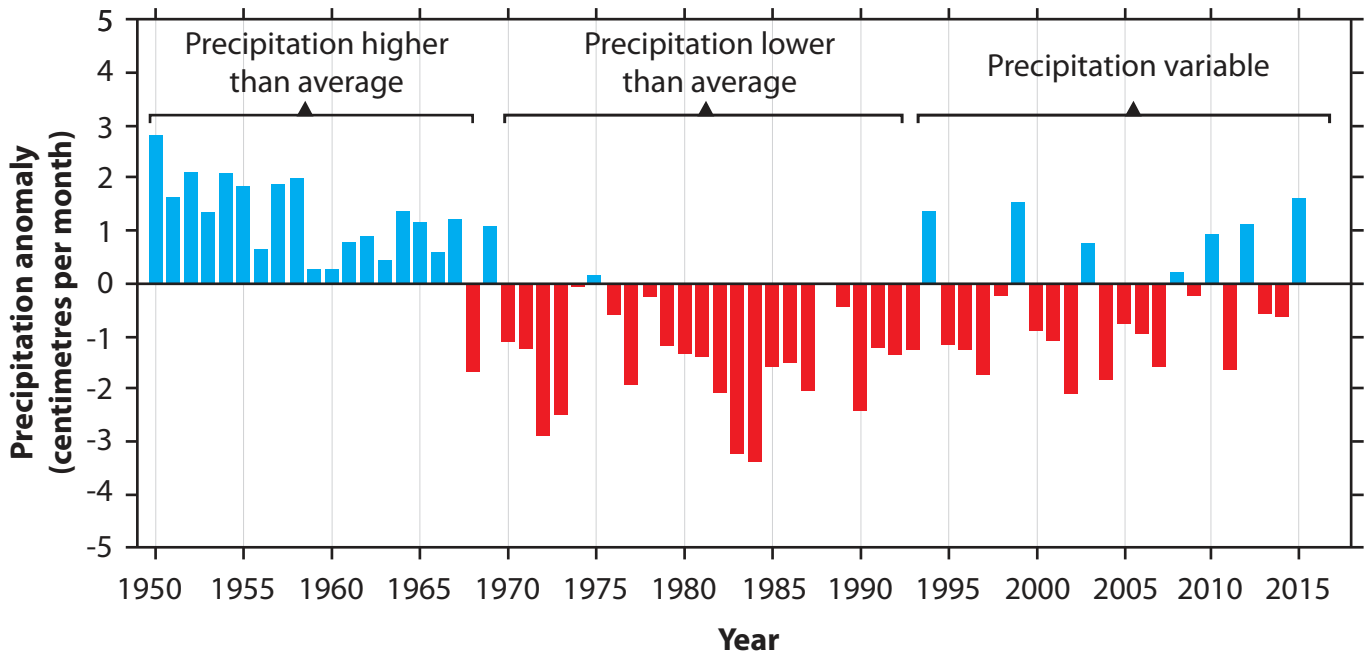


**Pearson**

**SECTION A**

**A1: Atmosphere and Weather Systems**

The following resource relates to Question 1.





Precipitation anomalies are variations from the average expected rainfall.

**Figure 1**

**Precipitation anomalies in the Sahel, Africa 1950–2015**

## A2: Biodiversity Under Threat

The following resource relates to Question 2.

Type of ecosystem service	Global scale 	Local scale 
Provisioning services	1	4
Cultural services	2	4
Regulating services	5	3

Level of importance of ecosystem service:



Figure 2

The importance of different ecosystem services at global and local scales

SECTION C

C1: Superpower Geographies

The following resource relates to Question 6.

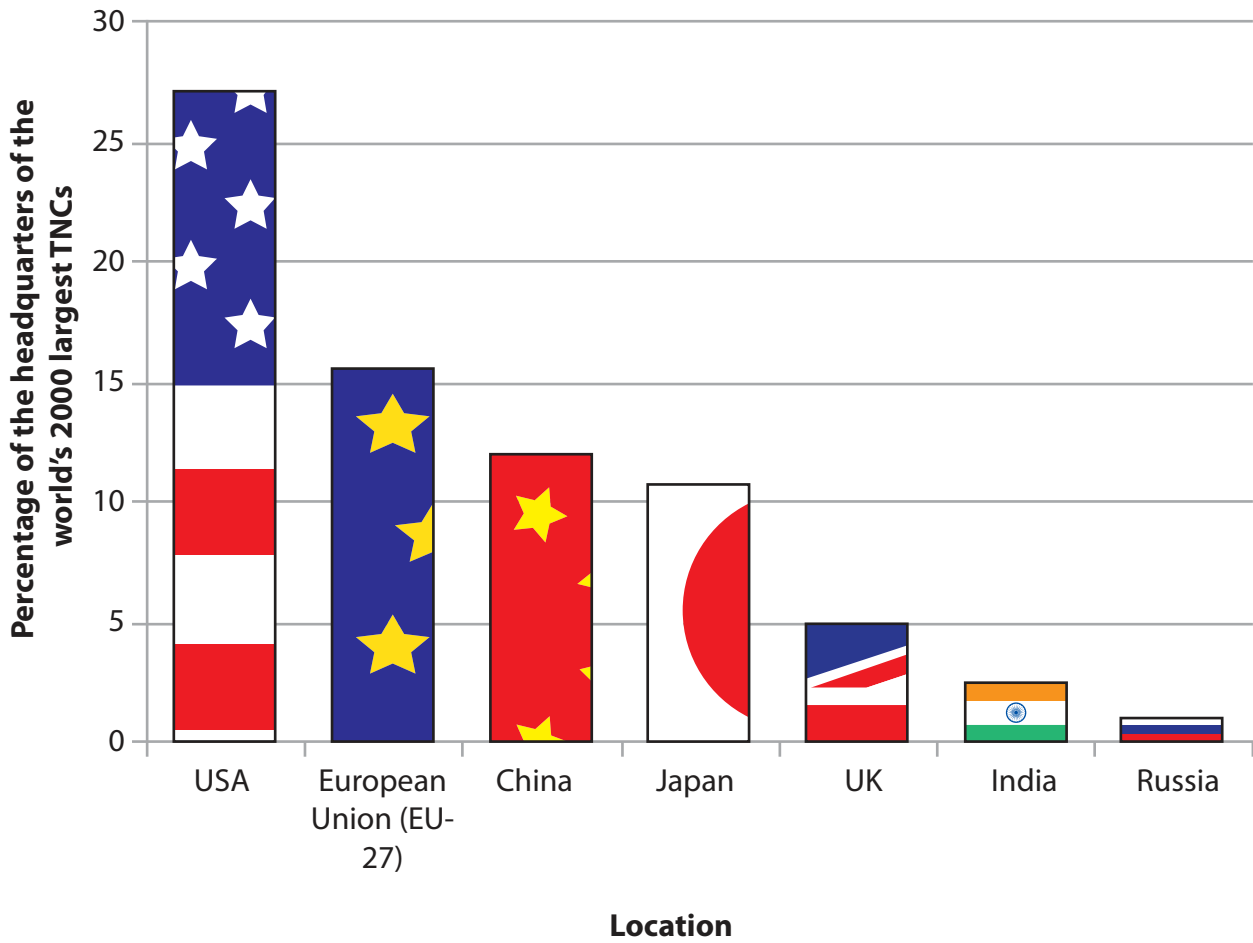


Figure 3

The locations of the headquarters of the world's 2000 largest TNCs in 2016

## C2: Bridging the Development Gap

The following resource relates to Question 7.



**R\$** = Brazilian real, the currency of Brazil

Indigenous Brazilians are descendants of the original or 'native' population of Brazil

**Figure 4**

**Average monthly income for three ethnic groups in Brazil, 2010**

**BLANK PAGE**

**BLANK PAGE**

**BLANK PAGE**